

Isle of Man Scouts – Water Classifications (C & B1)

Published – 17th July 2020

Authors: Ron Spencer, Andy Wells, Luke Brammer, Richard Speight, Mark Bentley, Jay Thompson

Approved by Guy Thompson IC & Executive Committee

Contents

- 1-2: Explanatory notes
- 3: River Neb Class C
- 4: Silverdale C *
- 5: Onchan Pleasure Park *
- 6: Mooragh C
- 6-8: Castletown C
- 9: Ramsey Harbour C
- 10: Injebreck Reservoir B1
- 11: Ramsey Harbour and Sulby River B1
- 12-13: Ramsey Bay B1
- 14-16: Chapel Bay & Gansey Bay B1
- 17-18: Port Erin B1
- 19-20: Derby Haven
- 21: Castletown Bay B1
- 22-23: Laxey Bay B1
- 24-25: Peel & Fenella Beach B1
- 26: Port Mooar B1
- 27: Port Soderick B1
- 28: Fleshwick Bay B1

These waters have been classified as outlined in this document but conditions vary considerably with wind direction, strength and tide. A written and dynamic risk assessment MUST be made before venturing on the water as to the prevailing conditions and the suitability of the area for the activity being undertaken. Activities running under Class B1 water rules are restricted to Onshore Wind force 3, Offshore Wind force 2.

However, there are strong tides all round this coastline, and in view of difficult local waters, strong currents and a large tidal range visiting groups are urged to contact the Isle of Man Scout Association for guidance.

*** Commercial where a fee is payable**



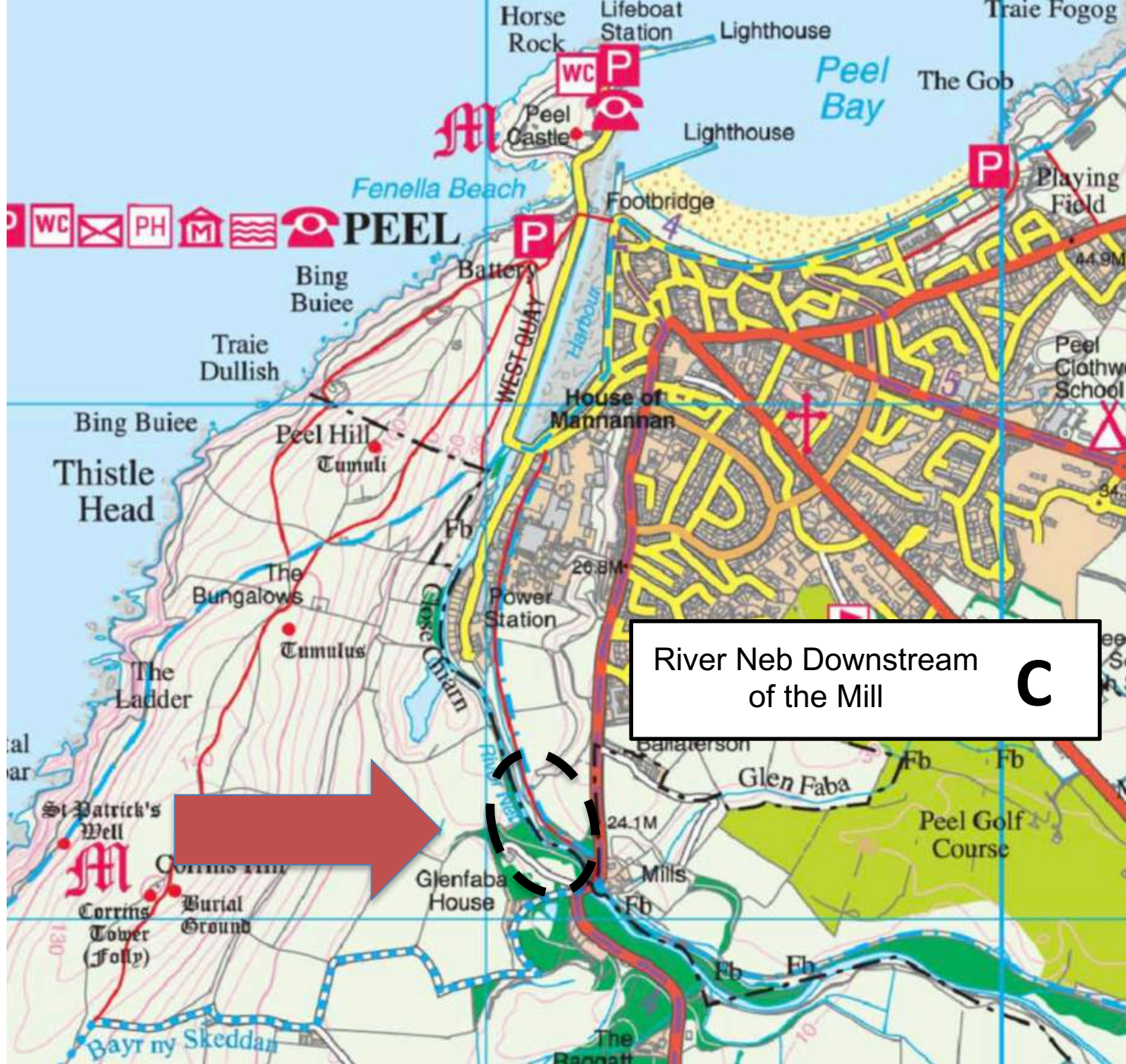
Isle of Man Scouts – Water Classifications (C & B1)

Class C waters:

- **Peel** - River Neb Downstream of the Mill
- **Ballasalla** - Silverdale Glen Boating Lake (Permission needed) * **Commercial** where a fee is payable
- **Onchan Leisure Park** (Permission needed)
- **Ramsey** - The Mooragh Lake
- **Castletown** - Impounded water above weir through to Poulsom Park
- **Ramsey Harbour**

Class B1 waters:

- **Injebreck Reservoir** (Permission required)
- **Ramsey Harbour** and **Sulby River**. Paddling not permitted below the Swing Bridge and above the Weir at the head of the River.
- **Ramsey Bay** Inshore of a line between the end of the Pleasure Park and Gob ny Rona.
- **Port St Mary** Chapel Bay in an area bounded by a line from the outer Breakwater to the Carthure Perch and Gansey Point.
- **Bay ny Carrickey** (Gansey Bay) inshore to the West of a line between the Carthure Perch and Shore Hotel.
- **Port Erin Bay** to shoreward of a line from the Sker Stack beneath Milner's Tower and the lower beach lighthouse and Bradda Glen Restaurant and the Raglan Pier.
- **Derby Haven** Inshore of a line between the Farm buildings to the North and the Golf Links tower to the South
- **Castletown** Inshore of a line between the Harbour Breakwater and the Lime kilns at the visitor centre to the South West and inshore of the line North East from the Harbour towards King William's College.
- **Laxey Bay** inshore of a line from the Laxey Pier Head to Clay Head.
- **Peel Fenella Beach**: east of a line between the castle and the Southern shore.
- **Peel Beach**: South of a line between the groyne and the Eastern end of the Promenade
- **Port Mooar** Inshore of a line from the west beach to the outcrop on the NE side (approx. 075°)
- **Port Soderick** Inshore of a line from 'the cave' to the Brooghs (approx. 075°)
- **Fleshwick Bay** Within the headlands of the bay. No further than 250m from shore



River Neb Downstream
of the Mill

C

Silverdale Glen Boating Lake

Ballasalla

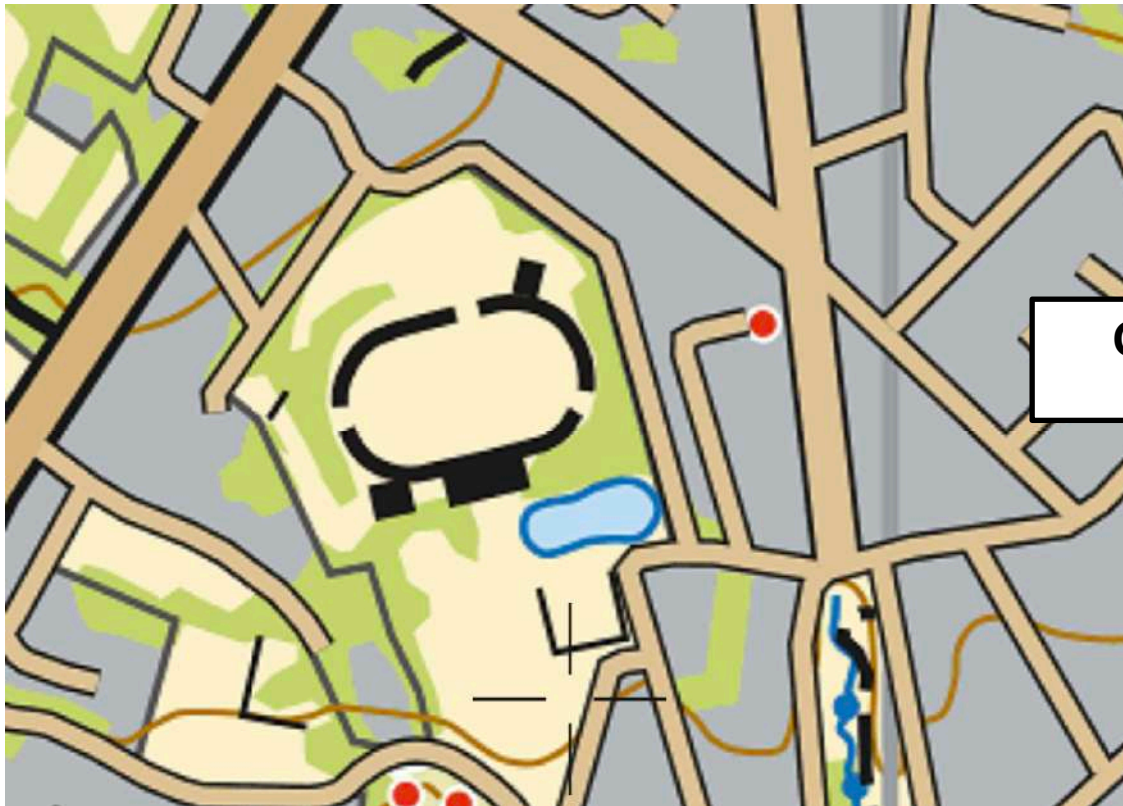
C

Boating lake

Silverdale

Currently not in use



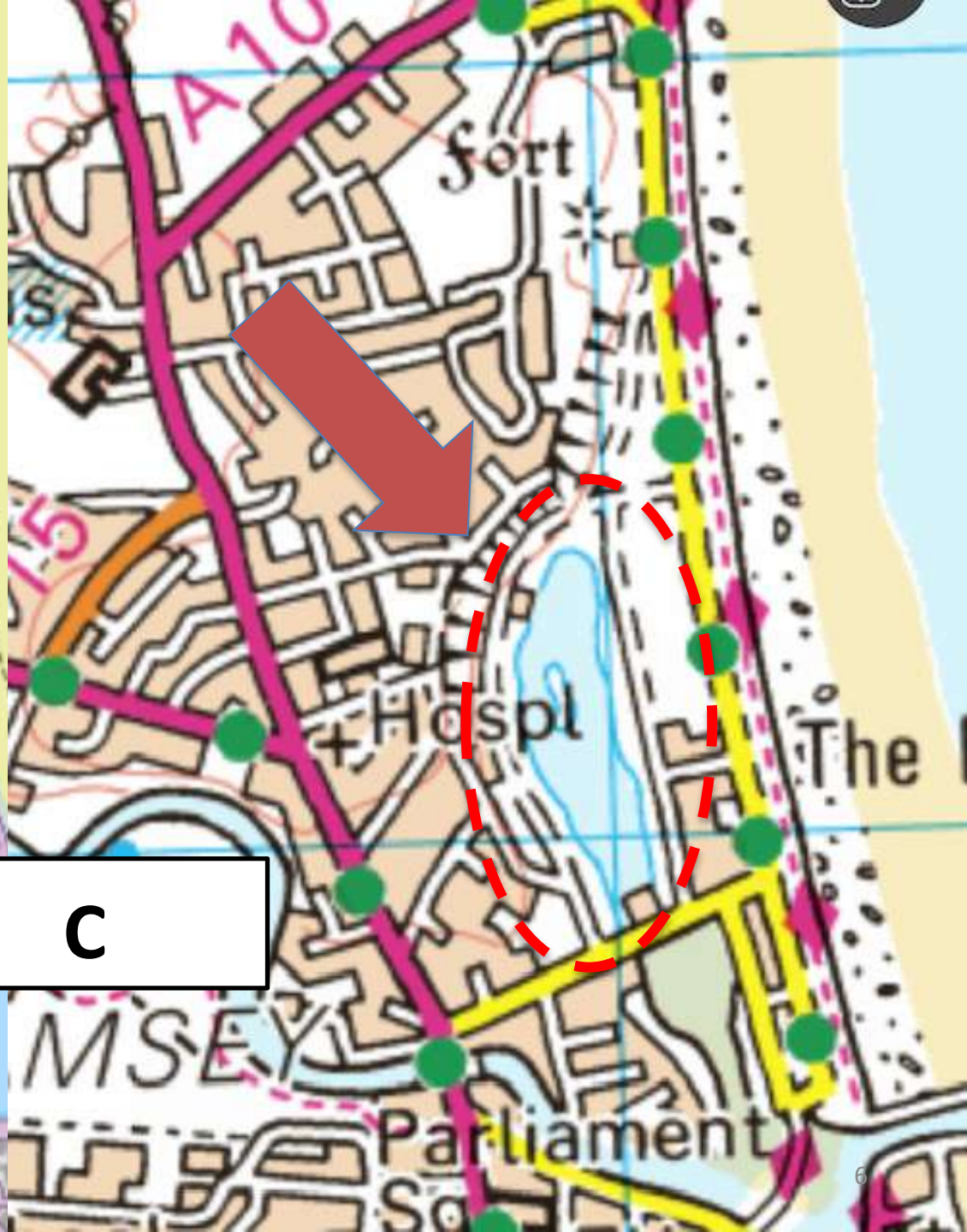


Onchan Pleasure Park C

Must have permission from Onchan Park
<https://www.onchan.org.im/recreation/onchan-park>



The Mooragh Lake
Ramsey

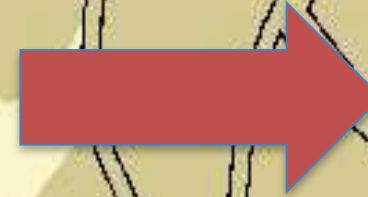
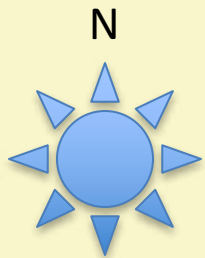


C

CASTLETOWN

Castletown Impounded water above weir
through to Poulson Park

C



Sp
(28)

Castle Rushen

Swing Bridge
2 F.R (hor)

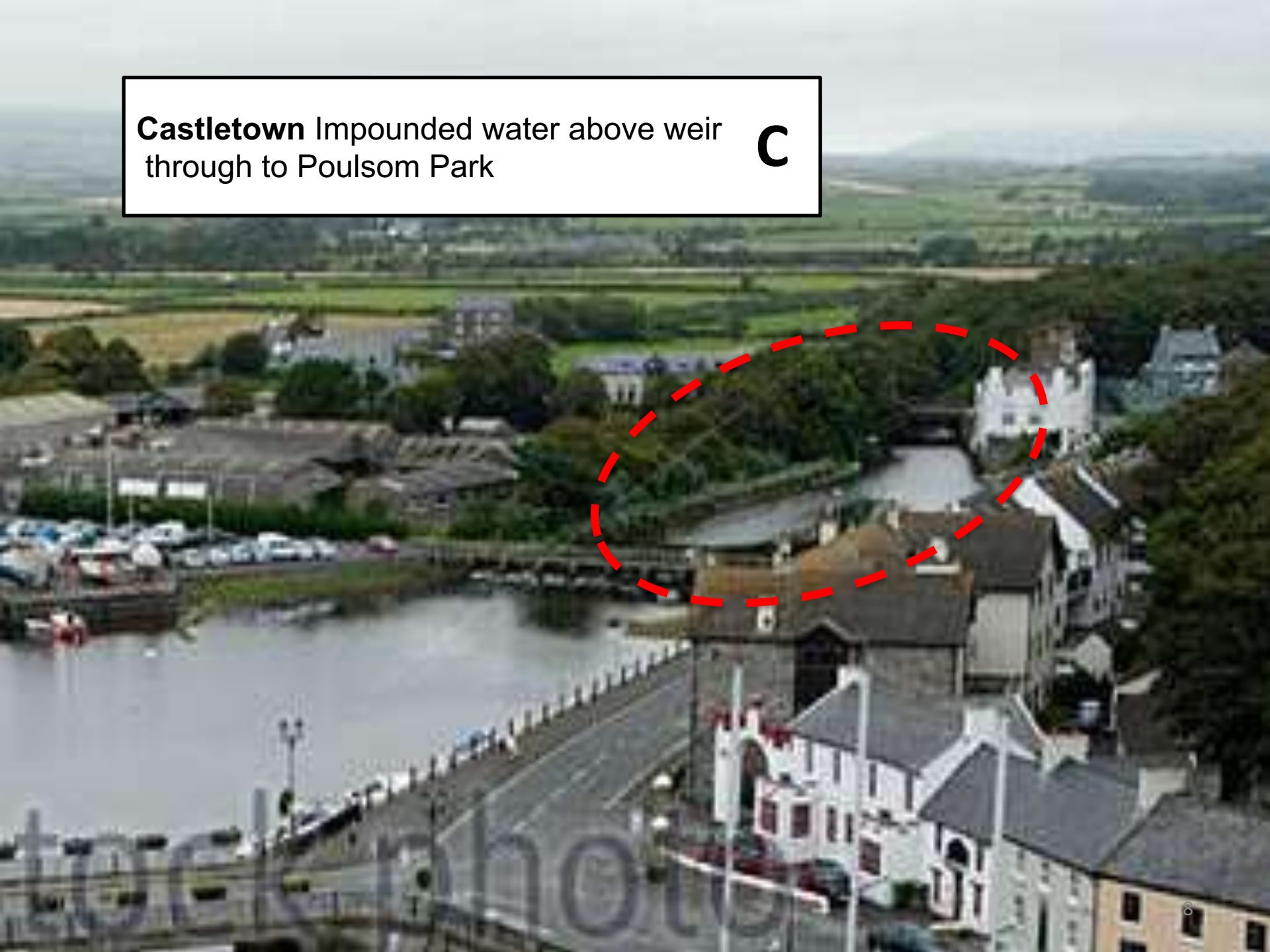
46

Lndg

Knockrushen

Castletown Impounded water above weir
through to Poulson Park

C



Ramsey Harbour

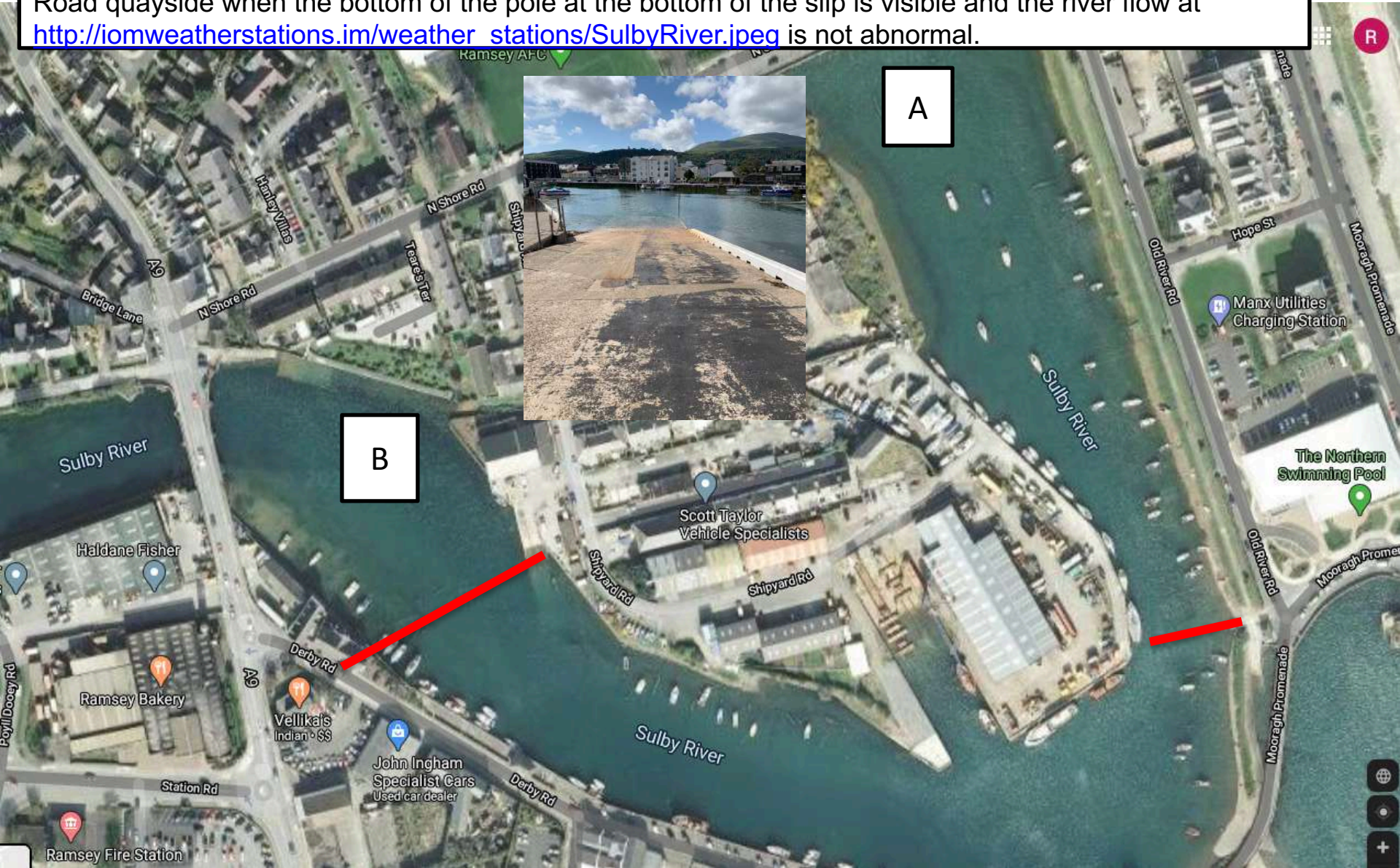
Wind strengths must not exceed Beaufort force 3.

Area "A" In the Old Hr pool to the north of the slipway by the swimming pool on the East of the harbour.

Area "B" in an area bounded by the slipway at Shipyard Road and the big white building on the Darby Road quayside when the bottom of the pole at the bottom of the slip is visible and the river flow at

http://iomweatherstations.im/weather_stations/SulbyRiver.jpeg is not abnormal.

C



Injebreck Reservoir B1

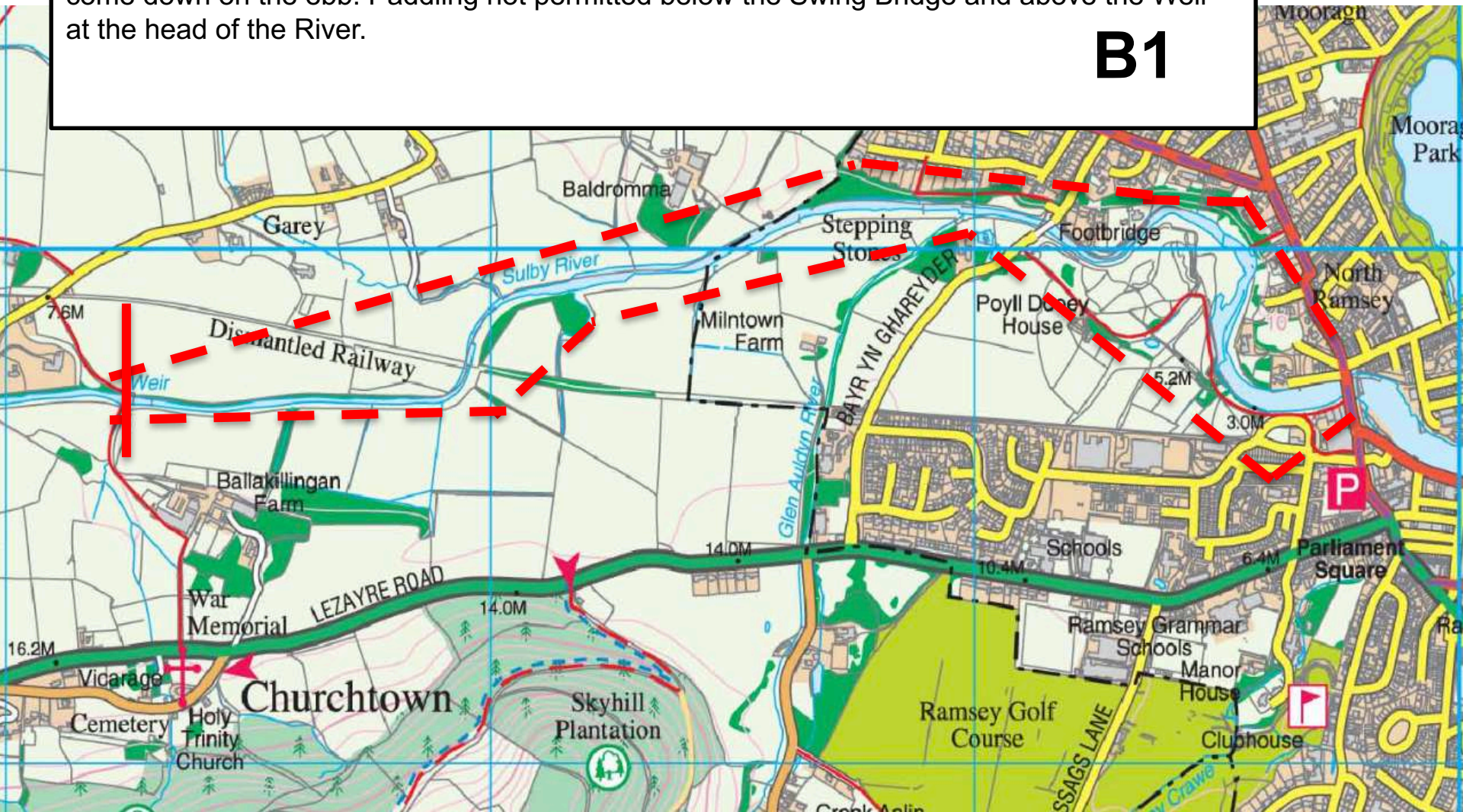
For use arrangements must be made with the Ardwhallin centre



Ramsey Harbour and Sulby River

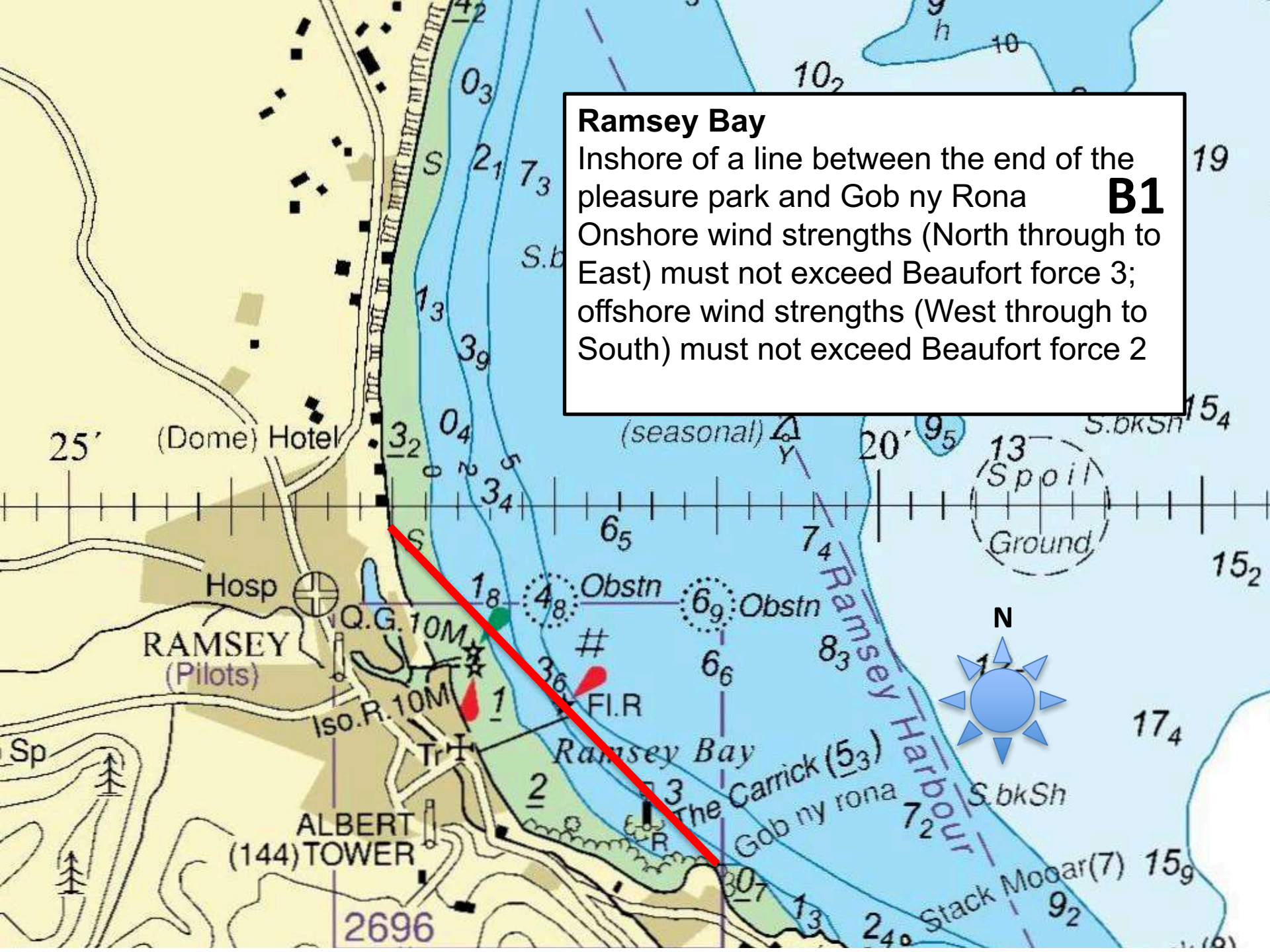
Wind strengths must not exceed Beaufort force 4 if launching in Harbour. Spring tides (midday) are necessary if you want to go above the footbridge. Go upstream on the flood tide come down on the ebb. Paddling not permitted below the Swing Bridge and above the Weir at the head of the River.

B1

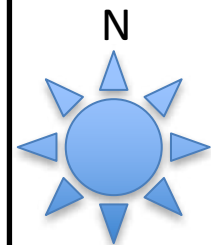
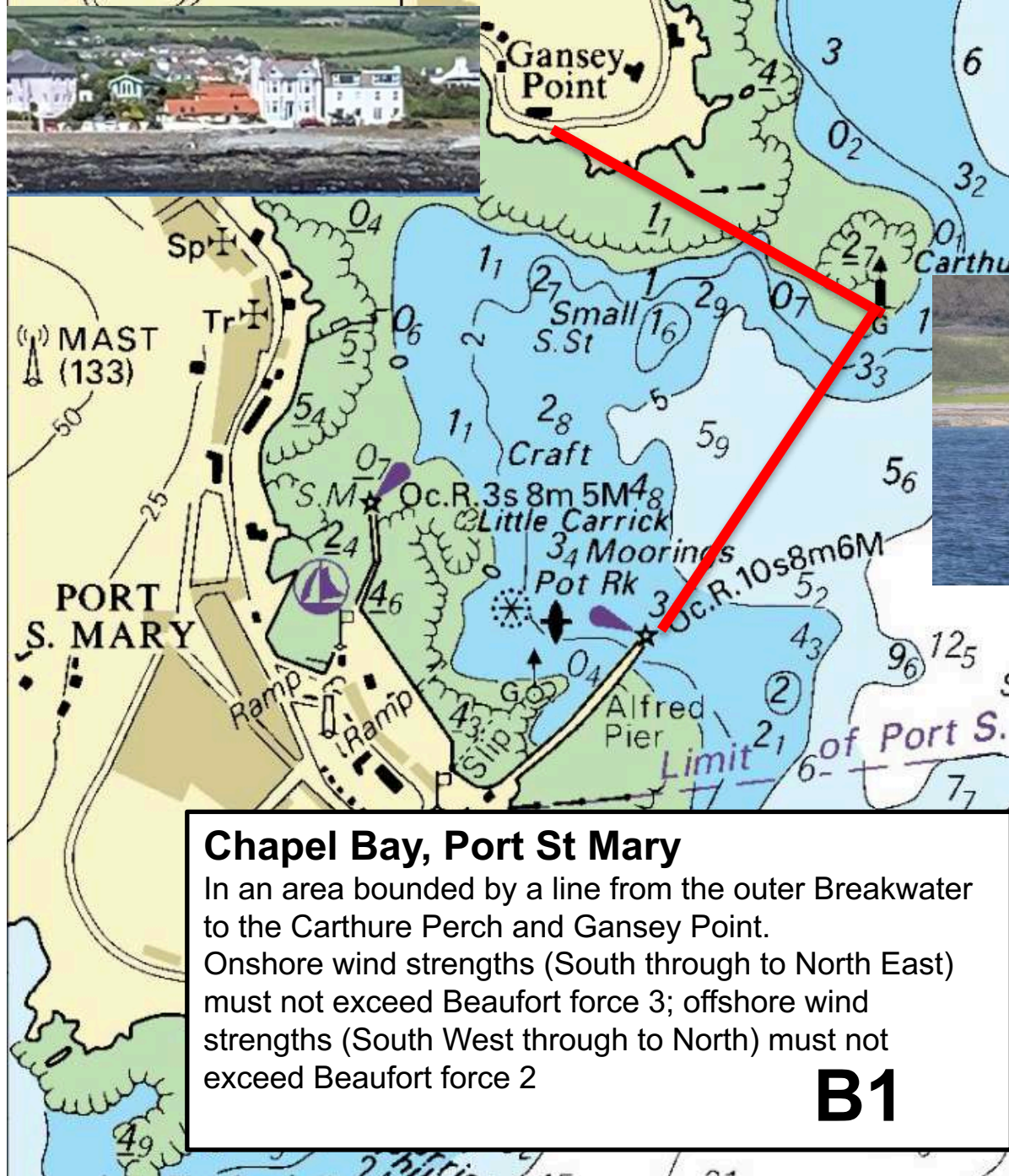


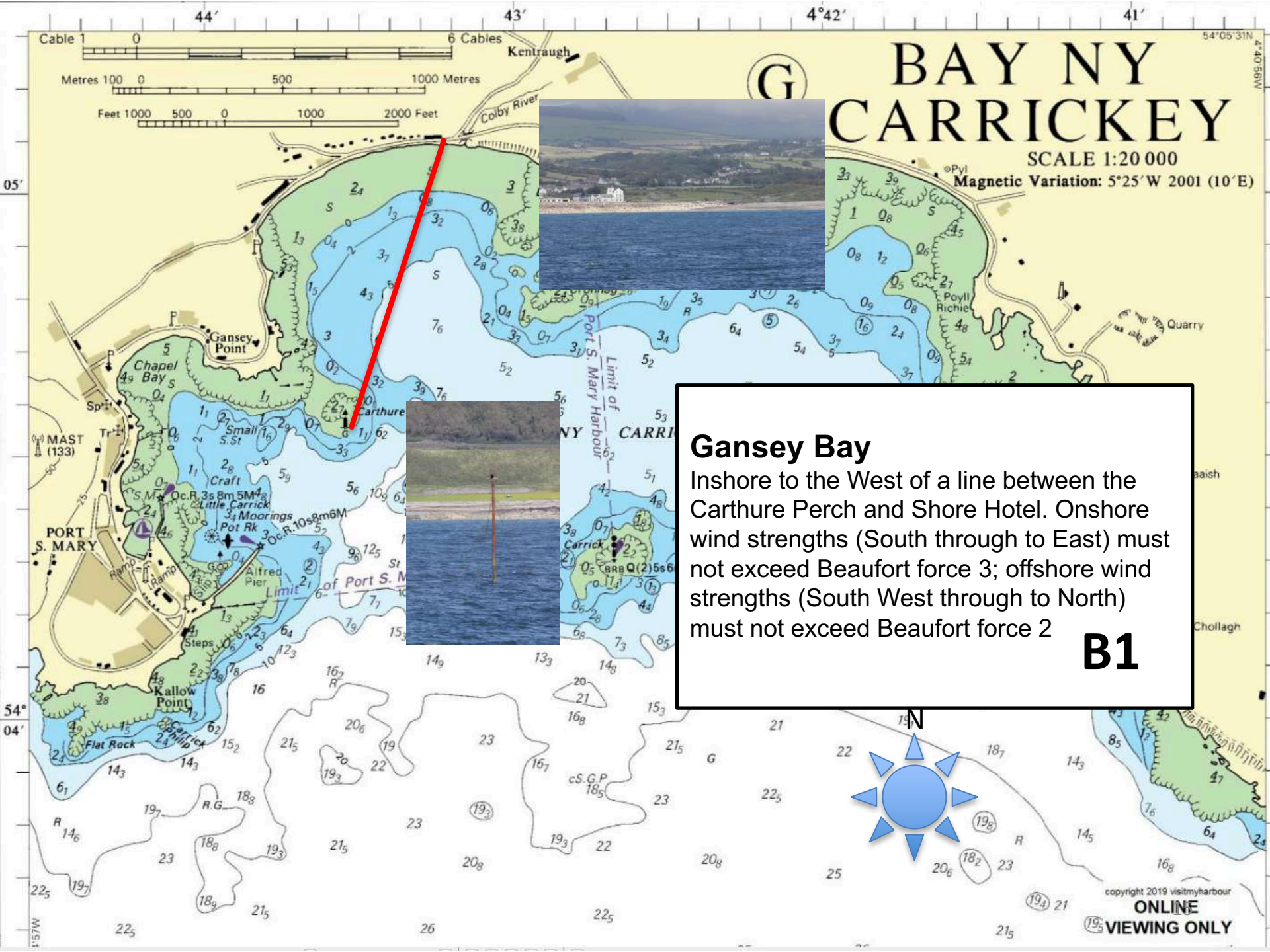
Ramsey Bay

Inshore of a line between the end of the pleasure park and Gob ny Rona **B1**
Onshore wind strengths (North through to East) must not exceed Beaufort force 3;
offshore wind strengths (West through to South) must not exceed Beaufort force 2



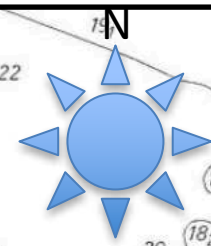




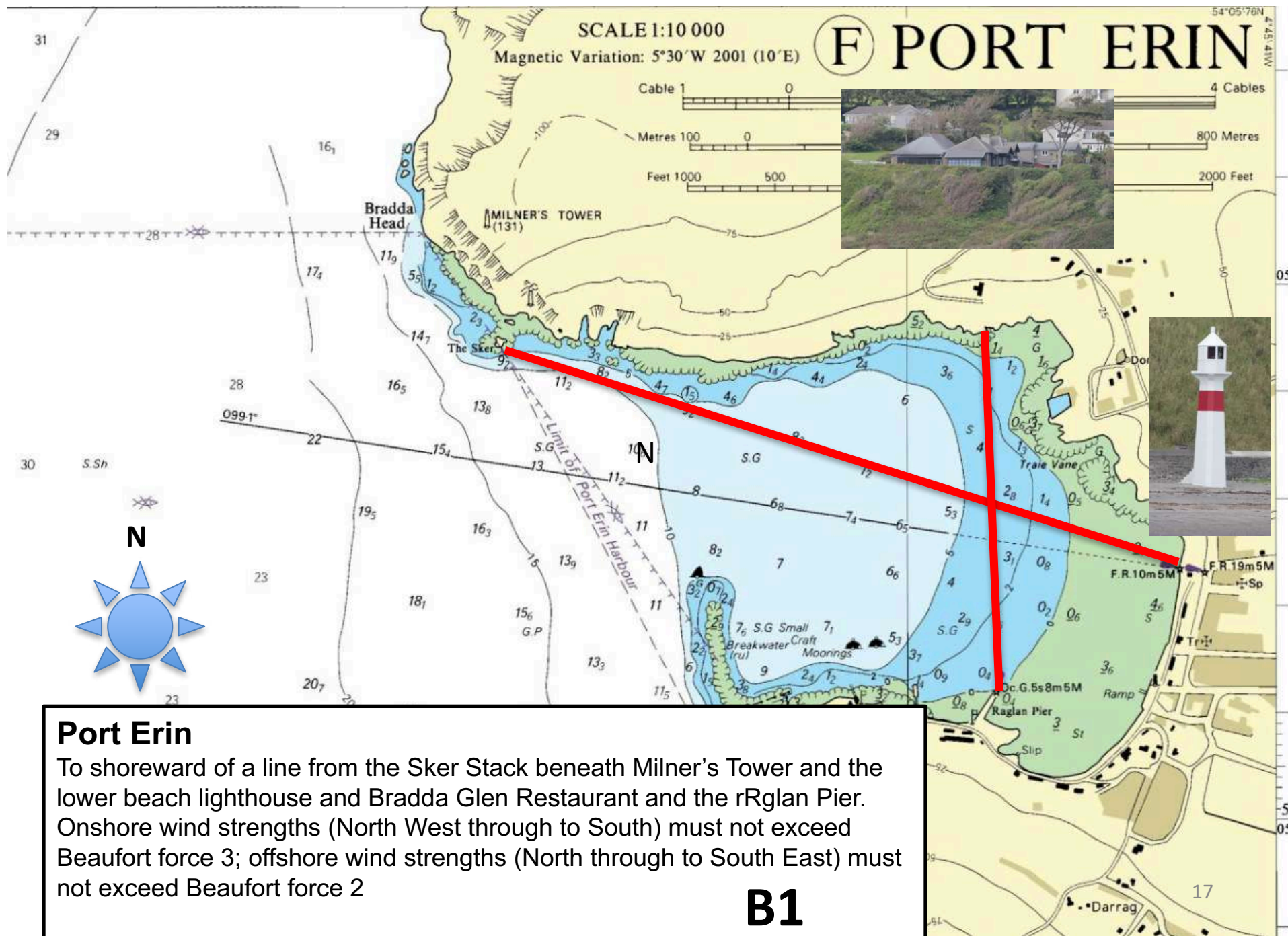


Gansey Bay
Inshore to the West of a line between the Carthure Perch and Shore Hotel. Onshore wind strengths (South through to East) must not exceed Beaufort force 3; offshore wind strengths (South West through to North) must not exceed Beaufort force 2

B1







Carn
Vreid

Coastguard Lookout

Milners Tower



Mine
(Dis)

Sheepfold

43.9M

Bradda
Glen

Bradda Head

South Bradda

Ghaw ny
Pharick

Spaldrick
Clearwater
Sea Farm

Club

Port T
rin Bay

Maie Vane

Traie Veg

Lighthouse

St Catherine's
Chapel (site of)

Life Boat Station

Lighthouse

Kione ny Garee

The Castles

Bro
Glo

18



Derby Haven

B1

Inshore of a line between the Farm buildings to the North and the Golf Links tower to the South.

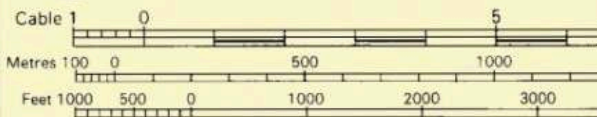
Onshore wind strengths (North through to East) must not exceed Beaufort force 3; offshore wind strengths (South through to West) must not exceed Beaufort force 2



© CASTLETOWN RAY

SCALE 1:20 000

Magnetic Variation: 5°25'W 2001 (10°E)



HISTORIC WRECKS

The sites of historic wrecks are protected from unauthorised interference. For details see Annual Notice to Mariners No 16 and Admiralty Sailing Directions.



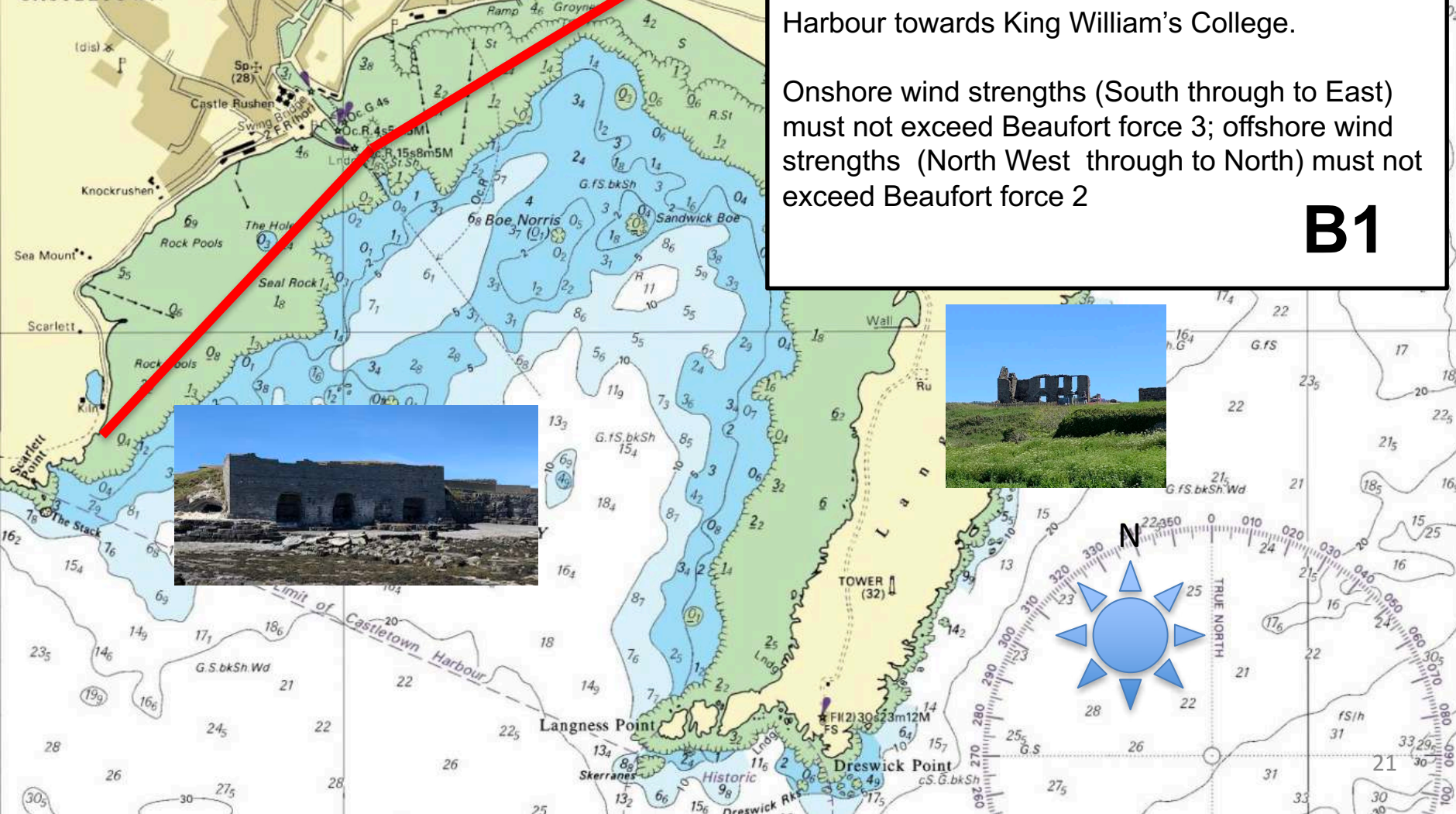
Castletown

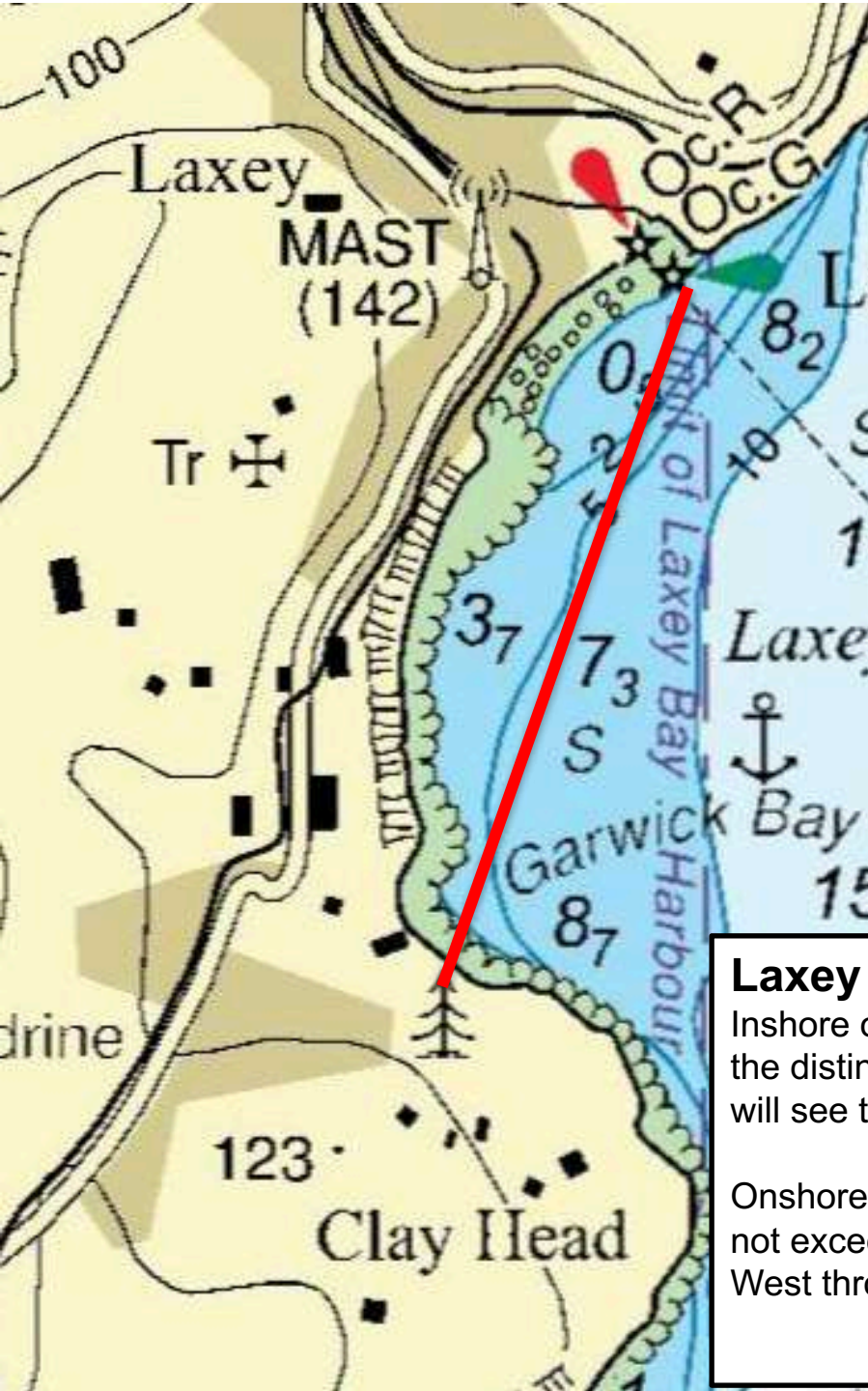
Inshore of a line between the Harbour Breakwater and the Lime kilns at the visitor centre to the South West and inshore of the line North East from the Harbour towards King William's College.

Onshore wind strengths (South through to East) must not exceed Beaufort force 3; offshore wind strengths (North West through to North) must not exceed Beaufort force 2

B1

CASTLETOWN





Laxey

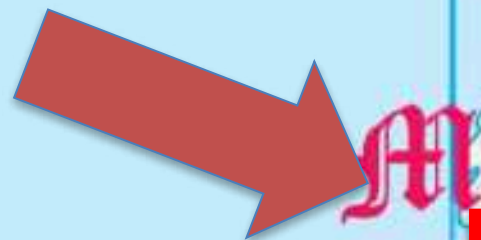
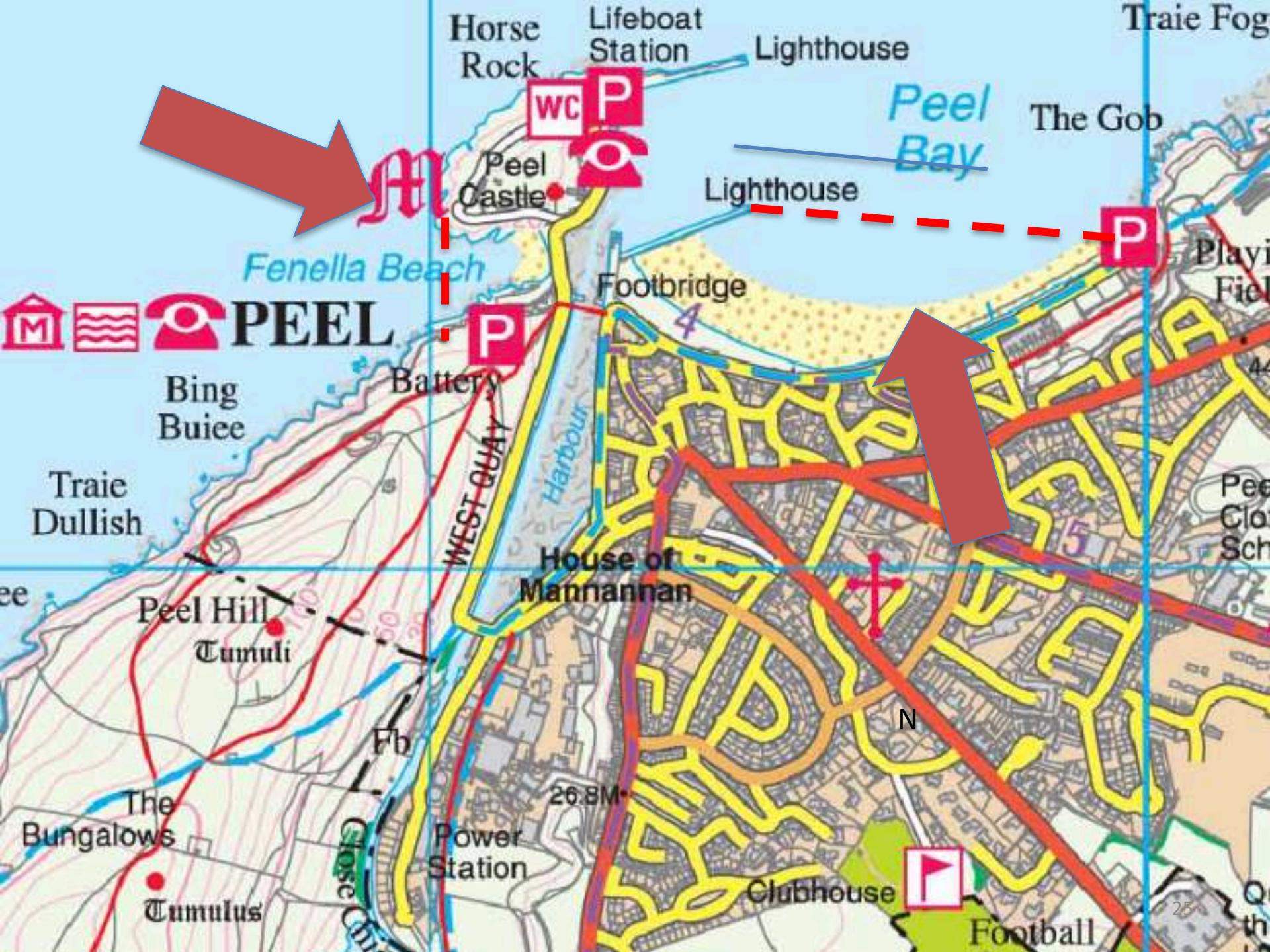
Inshore of a line from the Laxey Pier Head to slightly seaward of the distinctive white building on Clay Head. As you approach you will see the buildings in Garwick Bay itself.

Onshore wind strengths (North East through to South East) must not exceed Beaufort force 3; offshore wind strengths (North West through to South West) must not exceed Beaufort force 2

B1







   **PEEL**

Bing Buice

Traie Dullish

Peel Hill
Tumuli

The Bungalows

Tumulus

Horse Rock

Lifeboat Station

Lighthouse

Traie Fog

The Gob

Peel Bay

Peel Castle

Lighthouse

Footbridge

Battery

WEST QUAY

House of Mannannan

26.8M

Power Station

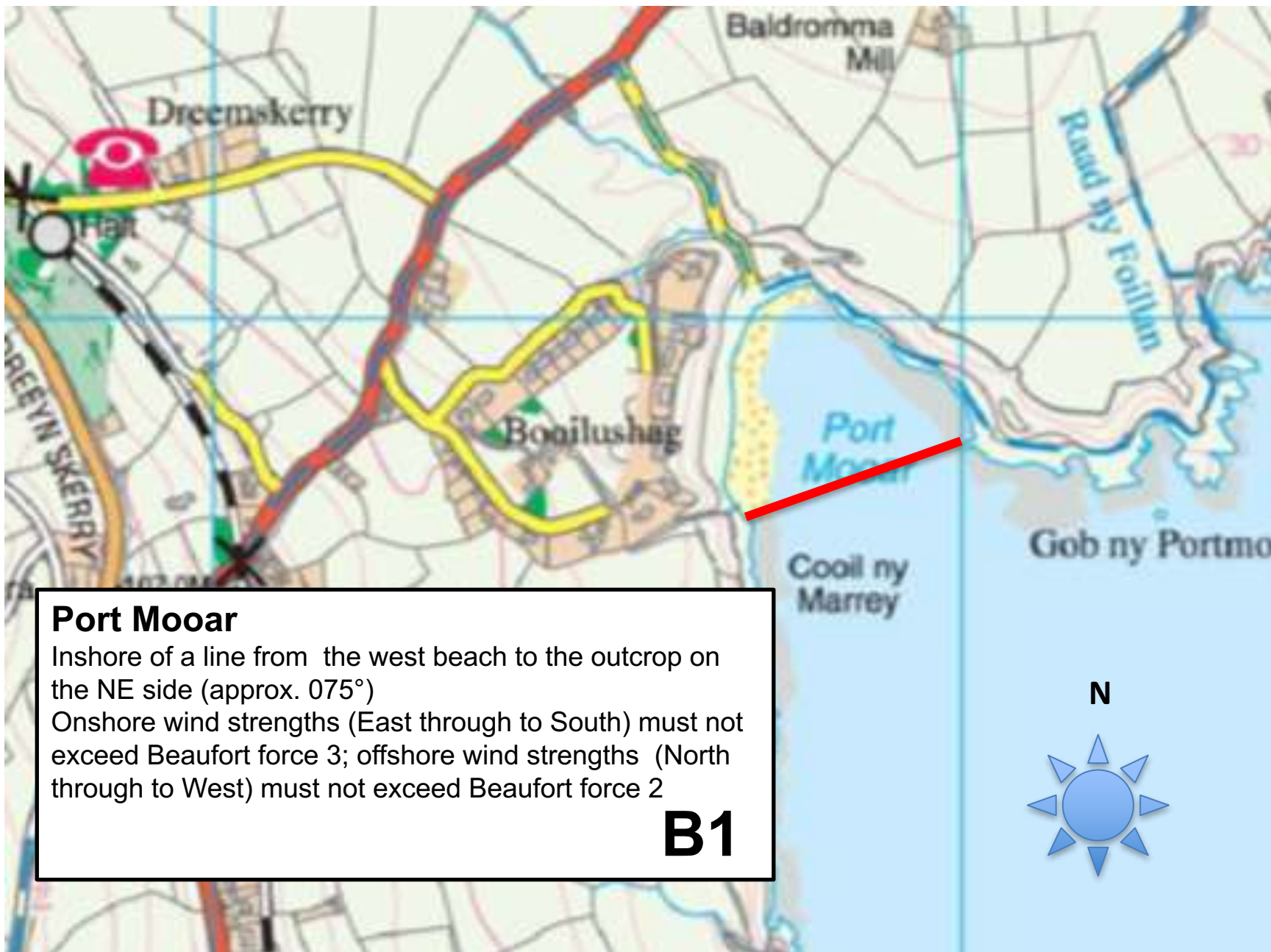
Clubhouse

Football

Playi
Field

Peel
Clo
Sch

Q
th



Port Mooar

Inshore of a line from the west beach to the outcrop on the NE side (approx. 075°)

Onshore wind strengths (East through to South) must not exceed Beaufort force 3; offshore wind strengths (North through to West) must not exceed Beaufort force 2

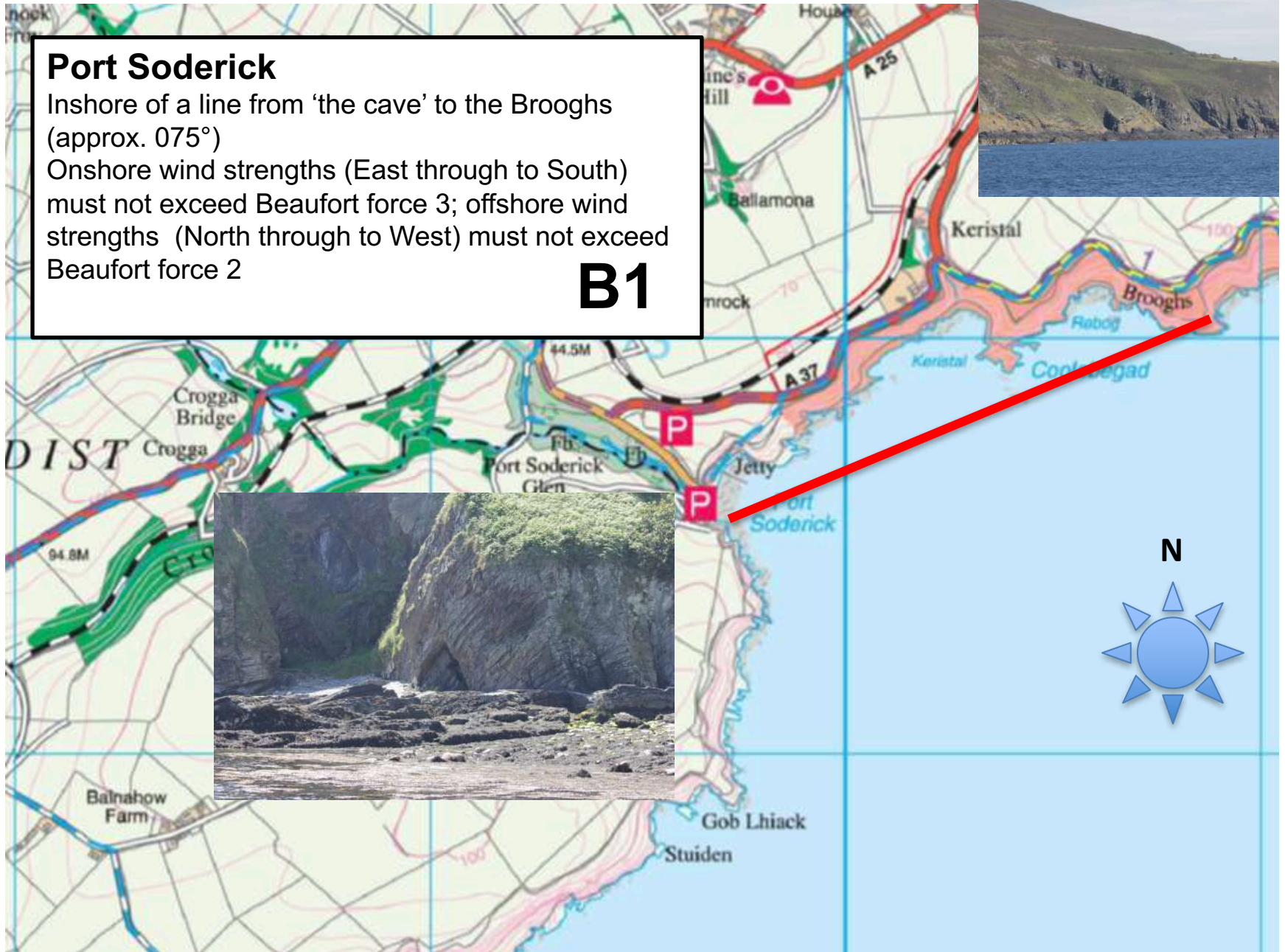
B1

Port Soderick

Inshore of a line from 'the cave' to the Brooghs (approx. 075°)

Onshore wind strengths (East through to South) must not exceed Beaufort force 3; offshore wind strengths (North through to West) must not exceed Beaufort force 2

B1



B1

Keep well within the headlands of the bay.
Onshore wind strengths (North) must not exceed Beaufort force 3;
offshore wind strengths (South East through South West) must not
exceed Beaufort force 2. Beware of sharp gusts dropping off the sides
of the bay.

